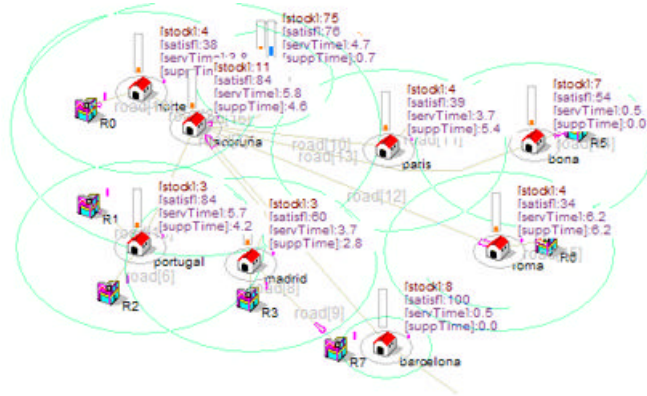




Tutorial on

scMod/Sim.exe

A modeller and dynamic simulator
for Supply Chain systems



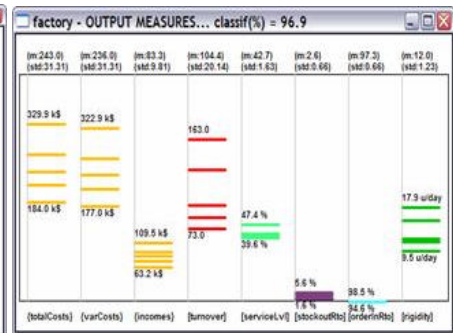
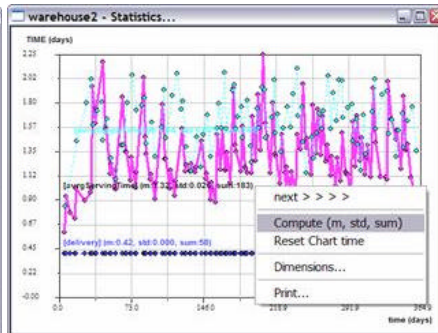
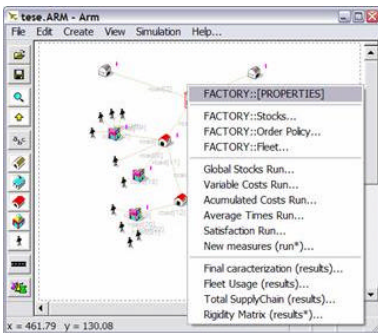
by

J. Manuel Feliz-Teixeira

Graduated in Physics, Msc in Mechanical Engineering,
PhD in Computer Simulation



		inputs			
		c1	c2	c3	c4
level 1	dep1	4.6 ± 0.3	---	---	---
	dep2	---	8.5 ± 0.8	---	---
	dep3	---	---	13.6 ± 0.6	---
	dep4	---	---	---	6.7 ± 9.0
level 2	ware1	1.6 ± 0.0	3.9 ± 0.6	---	---
	ware2	5.0 ± 0.4	5.0 ± 0.3	7.4 ± 0.7	6.5 ± 6.4
level 3	factory	4.6 ± 2.4	5.2 ± 1.3	4.6 ± 0.7	5.6 ± 1.6



scMod/Sim.exe are standard Windows applications for Supply Chain discrete modelling and simulation which can run in any ordinary computer, comprised of the executable files [scMod.exe](#) and [scSim.exe](#), of around 2MByte size. They include the possibility of analysing the Supply Chain "rigidity" or "flexibility" based on some procedures developed by the author.

More about the simulator at:
<http://paginas.fe.up.pt/~feliz/supplychainsimulator.htm>